

**Both stirring  
and heating**



Stirring at 300 - 999 rpm  
Heating up to 105°C\*  
Max. volume: 70 mL  
Temp. accuracy: 0.1°C

\* for vessel with OD= 30 mm

**999 €**



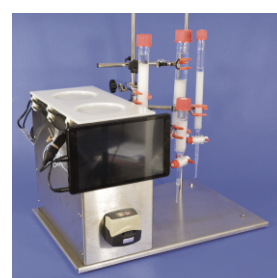
Evaporators



Dosing pumps



Shakers



Chromatography

[info@kamush.com](mailto:info@kamush.com)



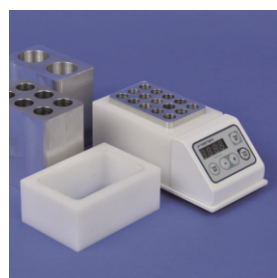
Dip coaters



Stirrers



Lab glassware



Heating blocks

# Incubator shaker



## Compact sizes – high capacity

**Holds even 4 one-liter bottles**

Dimensions: 300 × 365 × 440 mm

(w x d x h)

Working temp.: from ambient up to 60°C

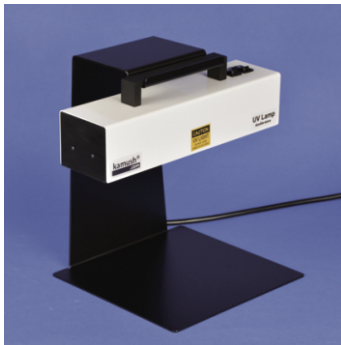
Weight: about 21 kg

Speed range: 0-200 rpm

Timer range: 0-100 h



# Double-wave UV lamp



**254 and 366 nm** with separated switch for each wavelength

Compact and light

Portable

With a dedicated stand

**Available in stainless steel  
or a white painted cover**



# Multipurpose shaker



## LP-shaker LP400SMd

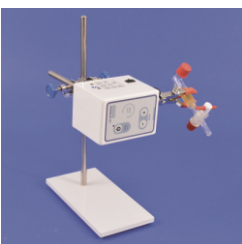
Adjustable angle (15, 30, 45, 60, 90, 180°) and full rotation (360°)

Max. 80 rpm at 15° to 180°

Max. 400 rpm at 360°

Stand in option

**Available also in stainless steel**



## LP-shaker LP200SMd

Adjustable angle (15, 30, 45, 60, 90, 180°) and full rotation

Max. 80 rpm at 15° to 180°, max. 200 rpm at 360°

Max. vessel capacity: approx. 200 mL



# Laboratory shakers



## LP-shaker LP360AMP

Adjustable angle (15, 30, 45, 60, 90, 180°) and full rotation (360°)

Nine speed levels of 4 to 120 rpm  
(depends on amplitude)  
Timer: up to 24 h

Also available in a brushed  
stainless steel casing



## LP360AMPk

Adjustable angle or  
full rotation  
Digital control by knob  
Built-in timer



## LP360PRO

Adjustable angle  
and full rotation  
Adjustable speed  
and work direction  
nine speed levels



## LP180Fk; LP180Ak

Fixed or adjustable  
angle (15° - 360°)  
Digital control by knob  
Adjustable speed



## LP180F; LP180A

Fixed or adjustable  
angle (15° - 360°)  
Controlled by buttons  
Adjustable speed



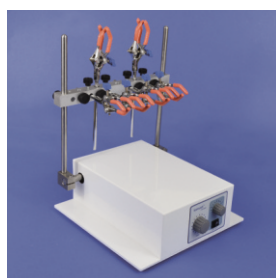
## LP750Bk

Wrist action shaker,  
adjustable speed (up to  
500 osc/min,  
amplitude: 1.5, built-in  
timer, max. capacity:  
4x750 g



## LP020Pk

Rocking shaker,  
shaking angle: 20°,  
max. speed: 200 rpm,  
built-in timer, max.  
capacity: 0.5 kg



## LP015RSk

Shaker with as many as  
15 clamps, shaking at 15°,  
max. speed: 200 rpm,  
built-in timer, max.  
capacity: 2 kg



## LP300Hk

Horizontal or orbital  
shaker, adjustable speed  
(up to 200 rpm),  
amplitude: 20 mm,  
max. capacity: 5 kg

# Laboratory shakers



## FPLC Lucjan isocratic

Flow rate: isocratic peristaltic pump 0-50 mL / min (in options 250 mL / min)

Detector: 254 nm (in options DAD 200 - 600 nm)

Tablet with LP-chrom software (FPLC version)

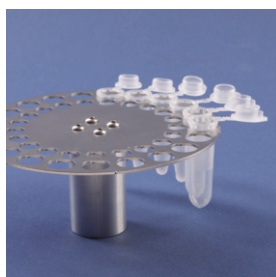
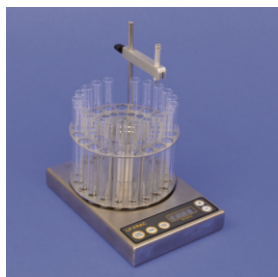
## FPLC Lucjan II gradient

Flow rate: system of two peristaltic pumps 0-50 mL/min

(in options 250 mL/min)

Detector: 254 nm (in options: DAD 200-600 nm)

Tablet with LP-chrom software (FPLC version)



## LP-FRAC fraction collector

For analytical, semi-prep HPLC and dosing pumps

Equipped with a rack for 20 standard glass tubes (8 mL, diameter: 12 mm) and Eppendorf tubes (0.5, 1.7 or 2 mL)

## Column ovens

Adjustable temperature up to 80° C

For HPLC columns up to 250 mm or 150 mm in width

Option: laboratory stand

Based on a Kamush mini (24V) controller



# LP-chrom chromatography software

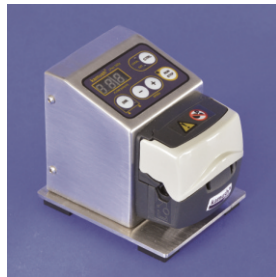


LP-chrom is a simple software which allows to record spectra and operate HPLC systems. The most salient features include: integration, storage and printing of chromatograms. The software is user-friendly and quite intuitive.



See more at: [www.lp-chrom.com](http://www.lp-chrom.com)

# Dosing peristaltic pumps



## LP-pump LPeri250

For commercially available hosing up to 4 mm in diameter and a wall thickness of 1.6 mm (1/16 inch)  
Adjustable flow of 0 - 250 mL/min (adjustable fluent flow 0.035 - 250 mL/min)

## LP-pump LPeri350

Adjustable flow (up to 350 mL/min)  
Hosing up to ID= 4.8 mm  
Operated using a control panel



## LP-pump LPeri1200

Adjustable flow (up to 1200 mL/min)  
Hosing up to ID= 8 mm  
Operated using a control panel

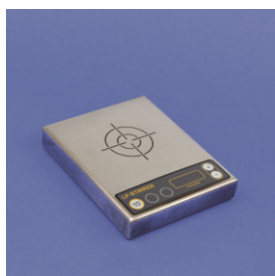
## LP-pump LPeri micro

Adjustable flow of 0.002 - 20 mL/min  
Hosing up to ID= 2 mm  
Operated using a control panel or LP-control software  
Dedicated stands in options



# Magnetic stirrers

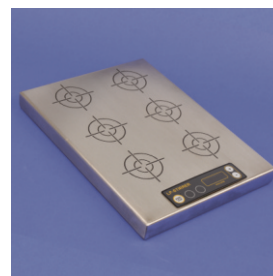
Finished with a brushed stainless steel casing, built-in digital LED display



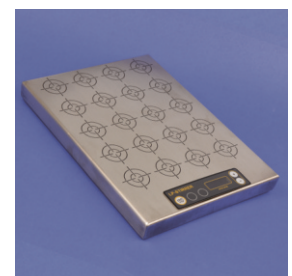
1 plate



2x2 plates



2x3 plates



4x5 plates



# Dip coater



## Lp100dip

Working stroke of the arm: 100 mm

Max. height of vessel: 200 mm

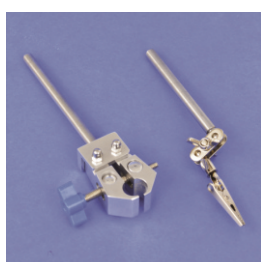
Max. vessel diameter: 100 mm

Lifting arm capacity: 300 g

Lowering/lifting speed: 1-200 mm/min

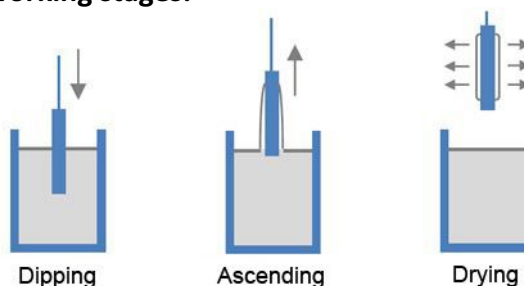
Adjustable platform for vessel (three diameters)

Dimensions: (w x d x h) 140 x 260 x 400 mm



**Available  
holders for  
precise work**

**Typical working stages:**



# Heating blocks

## LP-hotstirrer



Adjustable  
temperature up to 75° C  
(for vessel with  
OD= 30 mm up to 105° C)

Made from stainless  
steel and POM

Based on a Kamush  
mini controller (24 V)

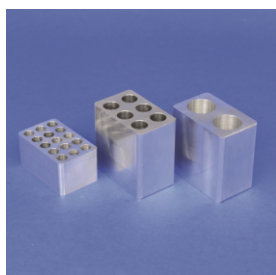
## LP-hotplate



Adjustable  
temperature from RT  
up to 60° C

Dimensions: 100x200 mm,  
200x200 mm, 200x300 mm  
Made from stainless steel

Based on a Kamush  
mini controller (24 V)



## LP-thermoblock

Heating up to 75°C (option: 105°C)

Heating blocks for any reaction vessel  
(non-standard dimensions of blocks on request)

Based on a Kamush mini controller (24V)

# Laboratory glassware and reactors

Vessels available in different sizes and parameters. See [www.kamush.com](http://www.kamush.com) for details



Vessels for solid phase synthesis (with a glass filter)



Vessels for microwave or classic heating synthesis



Large-scale synthesis vessels



Jacketed vessels



FPLC columns



Polypropylene vessels

Most vessels are of our own production. Customized vessels on request (different size, more threads etc.) Please contact us for details: [info@kamush.com](mailto:info@kamush.com)  
We use borosilicate glass and G1, G2 or G3 filters

## Peripheral equipment

Peripheral equipment available in different sizes and options. See [www.kamush.com](http://www.kamush.com) for details



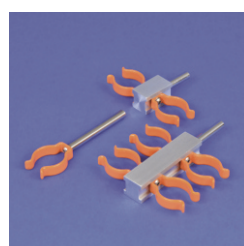
Universal stands



Dedicated stands



Round falcon holders



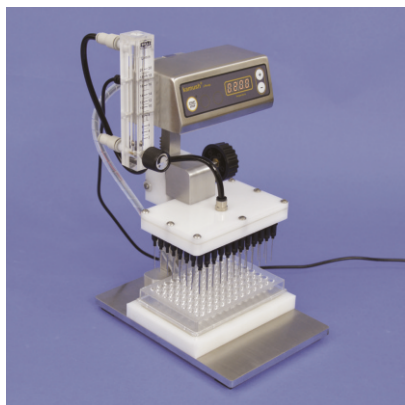
Falcon holders



Universal clamps

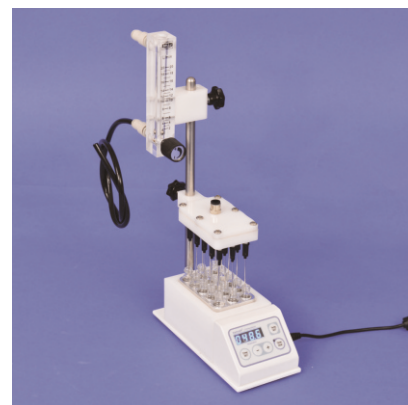
# Sample concentrators

25 or 33 cm rod width



**LPe integral** (max. heating temp. 75°C, with block 80x124x30 mm for 35 holes 12 mm / vials HPLC), T models - contain automatic gas flow and heating switch-off.

**Available models:** LPe integral25, LPe integral33, LPe integral25T, LPe integral33T



**LPeHB** (max. heating temp. 75° C, internal controller Kamush mini 2 with timer, aluminum block for 15 holes 12 mm / vials HPLC).  
Evaporator with a heating block.

**Available models:** LPeHB25, LPeHB33



**LPe mini** (model ,S' with a plastic stand, model ,H' with a heating block; models ,H' - max. 60°C, external controller Kamush mini, equipped with stand for 15 holes 12 mm / vials HPLC)

**Available models:** LPe mini25S, LPe mini33S, LPe mini25H, LPe mini33S

**LPe compact** model ,S' without heating, model ,H' - heating max 60°C, external controller Kamush mini, equipped with a plastic stand or a heating block 80x124x30 mm for 35 holes 12 mm / vials HPLC

**Available models:** LPe compact25S, LPe compact33S, LPe compact25H, LPe compact33H



## **Additional aluminium blocks**

50x80x80 mm, 2 holes of  $\varnothing$  29 mm  
50x80x80 mm, 6 holes 16  
50x80x80 mm, 1x $\varnothing$  29, 2x 16, 3x 12  
80x124x30 mm, 35 holes 12 (tubes)  
80x124x30 mm, 35 holes 12 (vials)  
80x124x80, 24 holes 16 mm  
80x124x80, 6 holes 29 mm

## **Aluminium blocks for Eppendorf**

50x80x40 mm, 15 holes 11  
80x124x30 mm, 35 holes 11

## **Aluminium blocks for HPLC vials**

50x80x40 mm, 15 holes 12  
80x124x30 mm, 35 holes 12

## **Accessories**

Isolation overlay for the 50x80x80 or 50x80x40 blocks dedicated for LPeHB and LPe mini  
Isolation overlay for the 80x124x50 or 80x124x30 blocks dedicated for LPe integral and LPe compact  
Head for 96 syringes (titration plates) for LPe integral and LPe compact  
Syringes – available lengths of 0,5, 1, 2, 3 and 4"  
Rotameters – available flows of 3, 10, 20 l/min

